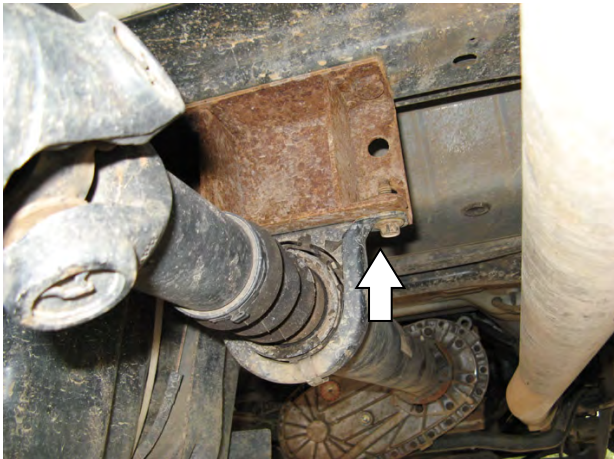
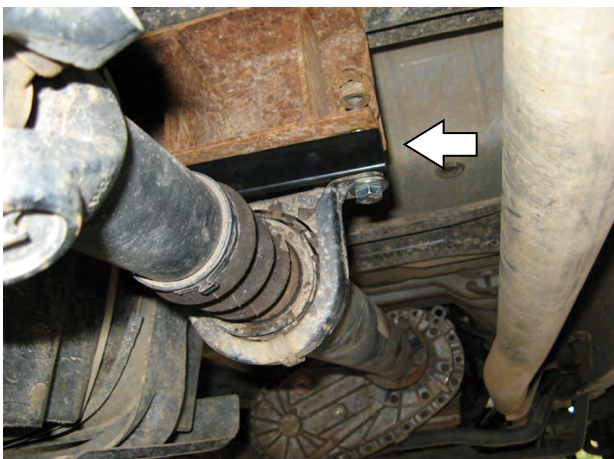


FK35 FORD F SERIES EXTRA CAB DRIVE SHAFT SPACER KIT

| Part Number | Description | Quantity |
|-------------|----------------------------|----------|
| 4721704 | Drive shaft spacer bracket | 1 |
| 6151061 | Bolt M12 x 65 x 1.25 | 2 |
| 6151135 | Nut Hex M12 x 1.25 | 2 |
| 4581049 | Washer Flat 12mm | 4 |
| 4581050 | Washer Spring 12mm | 2 |



1. Support drive shaft on an axle stand.
2. Remove bolts securing drive shaft carrier bearing to mount.



3. Fit spacer between the carrier bearing and the original factory mount as shown.
4. Secure carrier bearing with new M12 hardware supplied.

Note: If your truck is fitted with a captive nut this will need to be pushed out of the way or removed.