



# FITTING INSTRUCTIONS

Part Number: **5620010**  
Product **ARB REAR BAR**  
Description:  
Suited to **TOYOTA FJ CRUISER**  
vehicle/s:

## WARNING

### ALSO, NOTE THE FOLLOWING:

- ◆ This product is not suitable for fitment with Toyota tow bar. View page 3 for tow bar options.
- ◆ This product must be installed exactly as per these instructions using only the hardware supplied.
- ◆ In the event of damage to any rear bar component, contact your nearest authorised ARB stockist.
- ◆ Do not use this product for any vehicle make or model, other than those specified by ARB.
- ◆ Do not remove labels from this rear bar.
- ◆ This product or its fixing must not be modified in any way.
- ◆ The installation of this product may require the use of specialized tools and/or techniques
- ◆ It is recommended that this product is only installed by trained personnel
- ◆ These instructions are correct as at the publication date. ARB Corporation Ltd. cannot be held responsible for the impact of any changes subsequently made by the vehicle manufacturer
- ◆ During installation, it is the duty of the installer to check correct operation/clearances of all components
- ◆ Work safely at all times
- ◆ Unless otherwise instructed, tighten fasteners to specified torque

---

## ARB 4x4 ACCESSORIES

### Corporate Head Office

42-44 Garden St  
Kilsyth, Victoria  
AUSTRALIA 3137

Tel: +61 (3) 9761 6622  
Fax: +61 (3) 9761 6807

Australian enquiries  
North & South American enquiries  
Other international enquiries

sales@arb.com.au  
sales@arbusa.com  
exports@arb.com.au

---



**www.arb.com.au**

## FITTING REQUIREMENTS

### REQUIRED TOOLS FOR FITMENT OF PRODUCT:

Basic Tool Kit	17mm Socket
Jigsaw	Allen Key
Hacksaw	Air Hacksaw

### HAVE AVAILABLE THESE SAFETY ITEMS WHEN FITTING PRODUCT:

Protective eyewear		Hearing protection	
--------------------	-----------------------------------------------------------------------------------	--------------------	-------------------------------------------------------------------------------------

**NOTE:** 'WARNING' notes in the fitting procedure relate to OHS situations, where to avoid a potentially hazardous situation it is suggested that protective safety gear be worn or a safe work procedure be employed. If these notes and warnings are not heeded, injury may result.

### FASTENER TORQUE SETTINGS:

SIZE	Torque Nm	Torque lbft
M6	9Nm	4lbft
M8	22Nm	16lbft
M10	44Nm	32lbft
M12	77Nm	57lbft

<b>Fitting Kit 6172202 PARTS LISTING</b>			
<b>APPLICATION.</b>	<b>PART NO.</b>	<b>QTY</b>	<b>DESCRIPTION</b>
<b>Mount Assembly to Chassis</b>	6151097	8	M12 x 50 x 1.25
	4581050	8	12mm Spring Washer
	4581049	8	12mm Flat washer
	3757043	1	Recovery Hook
	6821166	2	Reflector
	5848337	2	Packer Chassis Fj Cruiser Rear
<b>Mount Trim to Bar</b>	6151256	4	M6 Button Head Cap Screw
	6151300	4	M6 Cage nut
	3199913	1	Trim Panel
<b>Mount Aluminium to bar</b>	6151256	6	M6 Button Head Cap Screw
	6151300	6	M6 Cage nut
	3199912	1	Aluminium Trim

### **Optional Accessories**

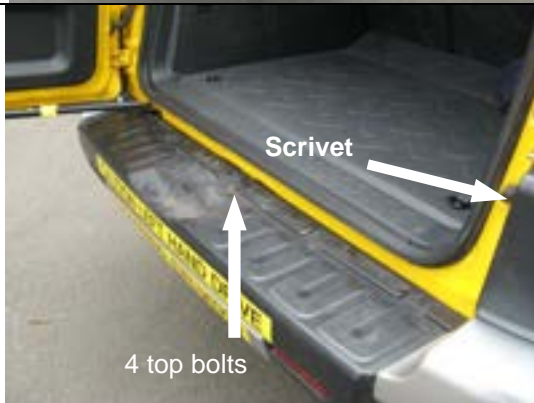
Also available for the FJ Cruiser is an ARB Tow bar. This tow bar can only be fitted in conjunction with the ARB FJ Cruiser Rear Bar.

ARB FJ Cruiser Tow bar Part Number: 572 0010

## FITTING PROCEDURE



1. To fit the Rear Bar, the plastic bumper must be cut. This is done at a later stage.



2. Removing the plastic bumper from the vehicle.

There are 4 bolts along the top, 2 underneath the centre of the bar, 1 screw on the underside of each end, which must be retained, and a scrivet located on the passenger side of the vehicle in the door jamb which should also be retained.

Also undo the connectors for the parking sensors located in the lower corner of each end of the bar.



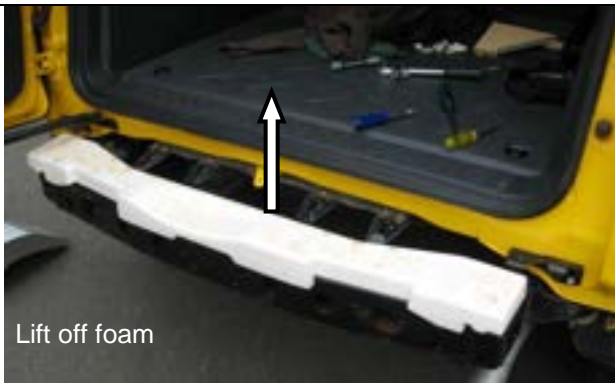
End screw to retain



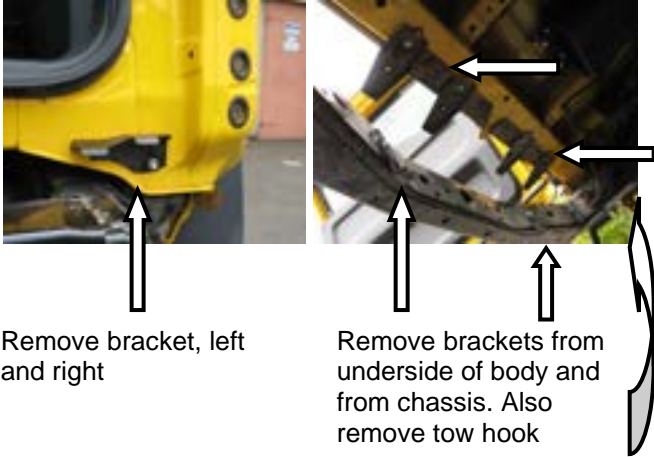
2 underside bolts



3. Once all fasteners have been removed, the bar can be pulled off the clips on each end by pressing down on the top edge whilst pulling the side out and back. Take care during this operation as the corners of the bar must be reused.



4. Once the clips are undone, the bar can be removed. With the bar removed the support brackets, tow hook and foam can also be removed.



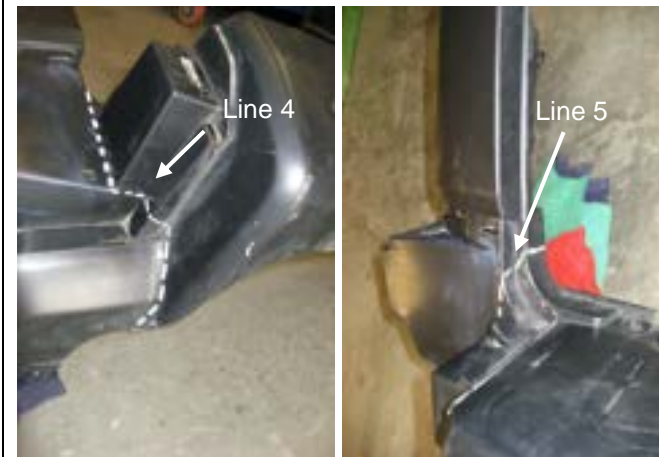
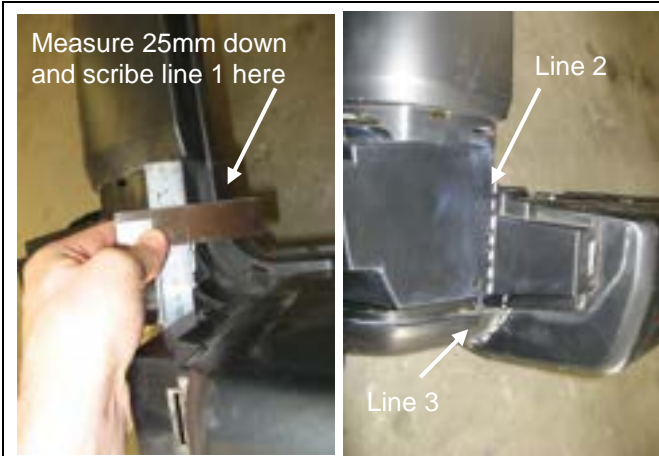
Remove bracket, left and right

Remove brackets from underside of body and from chassis. Also remove tow hook



5. With the bumper removed from the car it can now be trimmed. First remove the silver end caps by releasing all (5) retaining clips. Then release the clips for the parking sensor wiring.

If the parking sensors are to be refitted, remove them from the bar by sliding the large plastic clip sideways and remove from bar.



## 6. Marking the cut lines

### Corner section cut line

Images are of the left hand (drivers) side

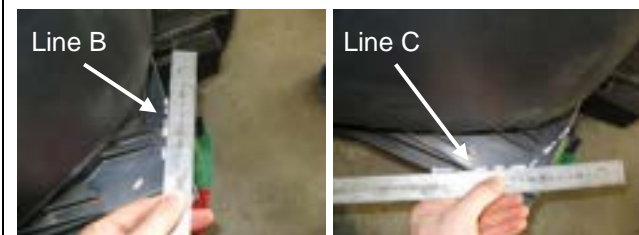
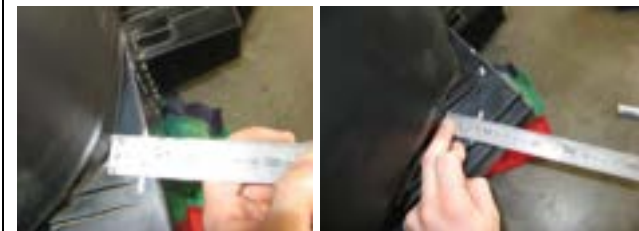
First measure down 25mm from the rebate and scribe a line (1) on the curved inner face.

Then run a line (2) down the corner of the vertical face and the centre section of the bar, followed by a line (3) along the bottom as shown.

Place a ruler between the end points of the two lines and draw a line (4) as shown.

For the final line (5) join the top of line 2 and the start of line 1 as shown.

This line can be cut to remove the corner from the centre section



### Square section cut line

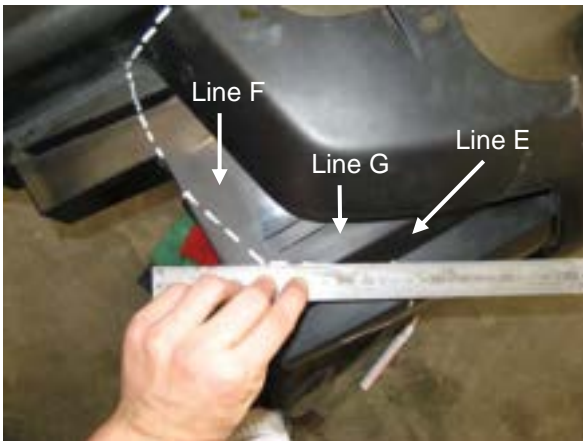
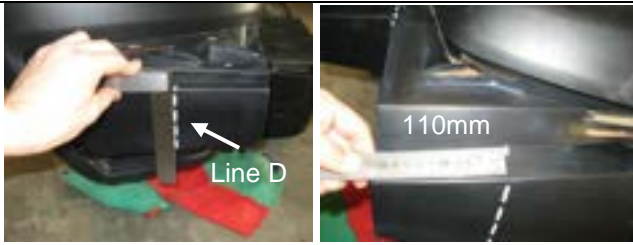
Start by measuring 40mm from the edge and draw a line (A) down using a square.

Then but the ruler into the plastic whilst resting the top surface of the box section and mark on each side of the ruler at 20mm

Repeat this process this time placing the ruler between the two double ribs and marking each side of the ruler at 35mm out.

Join the first 2 marks with a line (B), and the second 2 marks with a line (C).

## FITTING PROCEDURE



On the side of the box section measure a point 110mm from the end and square a line (D) down.

Turn the bar over to mark the cut lines underneath. Place the ruler in the corner of the box section and mark at 110mm.

Draw a line (E) from this point to the end of line D

Place the ruler on the surface hard against the double rib and measure out 70mm

Draw a line (F) from this point to the end of line A

Finally draw a line (G) joining the end of line F to the end of line E.



7. The final cut line viewed from underneath



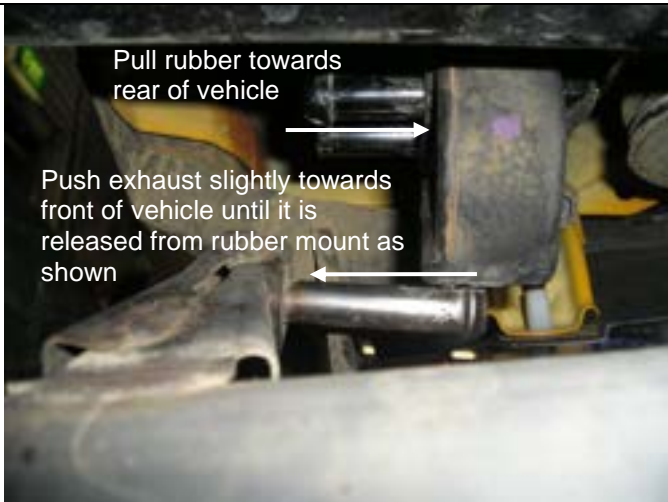
8. The final cut line viewed from above.

The bar can now be cut using a hacksaw, air hacksaw and/or jigsaw, Taking particular care around the edge closest to the door as this will be seen when the bar is fitted.





9. Once the bumper has been cut, refit each corner to the vehicle by clipping it the top and side and refitting the screw to the underside. Refit the scrivet on the passenger side.



10. Before fitting the rear bar, the exhaust mount must be released by pulling the rubber mount towards the rear of the vehicle and allowing the exhaust to drop slightly. This allows access to the bolt holes.

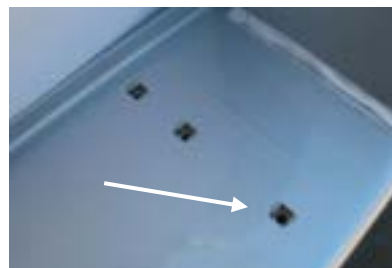


11. The tab found below the door opening in the centre of the car must be gently bent down to vertical with a hammer.

3 Cage nuts each side



12. Before the bar is fitted, the M6 cage nuts must be fitted to the outside 6 holes only. Fitting the cage nuts to the centre holes will be done once the bar is fitted.





## FITTING PROCEDURE



Passenger side  
(with trimmed clip)



Drivers side

13. If parking sensors are to be fitted, insert them in the holes with the wiring pointing towards the outside of the bar as shown.

NOTE: the passenger side sensor clip will require trimming as shown below.



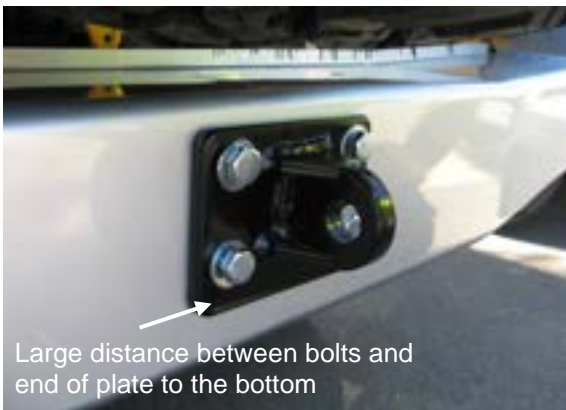
14. The rear bar can now be fitted.  
Carefully slide the rear bar over the chassis, taking care not to damage the plastic bumper. This may require 2 people.



One person each side to lift bar into place

15. With the bar sitting on the vehicle, place the recovery hook on with the large offset to the bottom, and attach to the front face using M12 x 50 x 1.25 bolts, 12mm flat washers and 12mm spring washers.

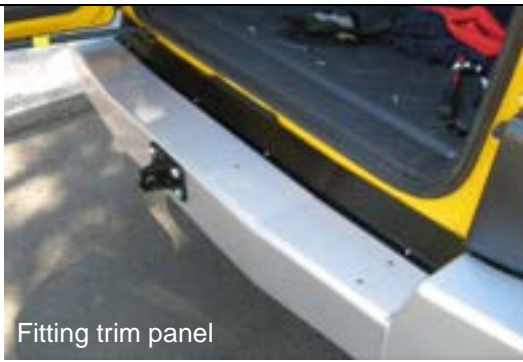
Do not fully tighten.



16. Take the chassis spacer and place between the chassis mount and the chassis of the vehicle. Attach using M12 x 50 x 1.25 bolts, 12mm flat washers and 12mm spring washers.

Check alignment of bar to vehicle, and then tighten all bolts to specified torque





Fitting trim panel



Fitting Aluminum plate

17. Fitting the cover trim and aluminium top

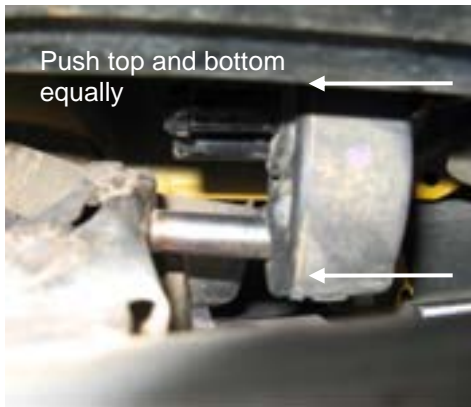
With the door open, fit the 4 M6 cage nuts to the centre holes of the rear bar, then place the cover trim in position and fit using M6 Button head cap screws. Then place the aluminium on top and fix using M6 Button head cap screws.

Then place the aluminium on top and fix using M6 Button head cap screws.

Once fitted to the vehicle, peel the back off the reflectors and stick them to the outer wings of the bar as shown.



18. If re-fitting parking sensors, place the wiring loom over the chassis rails and plug into the socket at the bottom of each quarter panel. There is a black clip which can be pressed into a slot in the chassis to stop the wiring moving.



19. Finally refit the exhaust mount by hooking the exhaust into the hole in the rubber, and then pushing the rubber mount towards the front of the vehicle without pushing the rubber off the black pins on the chassis.

