



FITTING INSTRUCTIONS

Part Number: **5680010/5680020**
Product Description: **REAR BAR WIDE FLARE/ REAR BAR NARROW FLARE**
Suited to vehicle/s: **2021 FORD BRONCO**

WARNING

ALSO, NOTE THE FOLLOWING:

- ◆ This product must be installed exactly as per these instructions using only the hardware supplied.
- ◆ In the event of damage to any component, contact your nearest authorised ARB stockist.
- ◆ Do not use this product for any vehicle make or model, other than those specified by ARB.
- ◆ This product or its fixing must not be modified in any way.
- ◆ The installation of this product may require the use of specialized tools and/or techniques.
- ◆ It is recommended that this product is only installed by trained personnel.
- ◆ These instructions are correct as at the publication date. ARB Corporation Ltd. cannot be held responsible for the impact of any changes subsequently made by the vehicle manufacturer.
- ◆ During installation, it is the duty of the installer to check correct operation/clearances of all components.
- ◆ Work safely at all times.
- ◆ Unless otherwise instructed, tighten fasteners to specified torque.

ARB 4x4 ACCESSORIES

Corporate Head Office

42-44 Garden St
Kilsyth, Victoria
AUSTRALIA 3137

Tel: +61 (3) 9761 6622
Fax: +61 (3) 9761 6807

Australian enquiries
North & South American enquiries
Other international enquiries

sales@arb.com.au
sales@arbusa.com
exports@arb.com.au

www.arb.com.au

GENERAL CARE AND MAINTENANCE

By choosing an ARB Bar, you have bought a product that is one of the most sought after 4WD products in the world. Your bar is a properly engineered, reliable, quality accessory that represents excellent value. To keep your bar in original condition it is important to care and maintain it following these recommendations:



- As part of any Pre Trip Preparation, or on an annual basis, it is recommended that a thorough visual inspection of the bar is carried out, making sure that all bolts and other components are torqued to the correct specification. Also check that all wiring sheaths, connectors, and fittings are free of damage. Replace any components as necessary. This service can be performed by your local authorized ARB Stockist.

FITTING REQUIREMENTS

REQUIRED TOOLS FOR FITMENT OF PRODUCT:

Metric Socket Set	Metric Wrench Set
Phillips Head Screwdriver (Short and Long Length)	Small Spirit Level
Power Drill 13mm (1/2") capacity	12mm (1/2") drill bits
Torque Wrench (up to 200Nm)	Marking pen
Half round file	Soft Hammer
Wide masking tape	Tape Measure or Ruler

HAVE AVAILABLE THESE SAFETY ITEMS WHEN FITTING PRODUCT:

Protective eyewear 	Hearing protection 
--	--

NOTE: 'WARNING' notes in the fitting procedure relate to OHS situations, where to avoid a procedure be employed. If these notes and warnings are not heeded, injury may result.

FASTENER TORQUE SETTINGS:

SIZE	Torque Nm	Torque lb-ft
M4	1.8	1.3
M6	9	7
M8	22	16
M10	44	32
M12	77	57
M16	175	129

PARTS LISTING

APPLICATION.	PART NO.	QTY	DESCRIPTION
MUFFLER MOUNT RELOCATION	3753115	1	EXHAUST RELOCATION
	6151021	2	BOLT HXHD M8x1.25x20
	4581044	2	WASHER FLAT M8x17x1.6
	6151132	2	NUT FLANGE M8x1.25
CHASSIS MOUNTS	4655082R	1	CHASSIS REC HIGH LIFT BRKT RH
	4655082L	1	CHASSIS REC HIGH LIFT BRKT LH
	6151727	2	BOLT HXHD FL M16x2.0x35
	6151728	2	NUT FLANGE M16x2.0
	6151374	4	BOLT HXHD M12x1.75x110
	4584363	4	WASHER FLAT M12x26x4
	6151657	4	NUT FLANGE M12x1.75
RECOVERY POINT	3750952R	1	RECOVERY HOOK ANGLE PLT RHS
	3750952L	1	RECOVERY HOOK ANGLE PLT LHS
	6151355	4	BOLT HXHD M12x1.75x30
	4584412	4	WASHER FLAT M12x24x2.5
	3195397	2	COATED RECOVERY HOOK
	6151097	2	BOLT HXHD M12x1.25x50
	4584363	2	WASHER FLAT M12x26x4
	6151862	4	BOLT HXHD FL M12x1.25x55
6152023	6	NUT FLANGE M12x1.25	
REAR BAR	4655081/4655101	1	WIDE BODY REAR BAR/ NARROW BODY REAR BAR
	3750867	1	CENTRAL BOLT IN PNL
	5848479	2	SHIM ARB SENSOR HOUSING
	3500290	1	SENSOR SURROUND KIT (4)
	6151300	6	NUT CAGED M6 2.6-3.5
	4581082	6	WASHER FLAT M6x20
	6151213	6	BOLT HXHD M6x1.0x20
	3195479	2	PLATE ADJUSTMENT SHIM
	6151360	8	BOLT HXHD M12x1.75x35
4584363	8	WASHER FLAT M12x26x4	
NUMBER PLATE RELOCATION	3750863	1	NUM PLT BRKT
	6821423	1	LICENSE PLATE LIGHT
	6151269	2	SCREW PHD M4x0.7x10
	4584294	2	WASHER FLAT M4x9x0.8
	6152047	2	NUT HEX M12x1.5
	6152046	2	BOLT HXHD M12x1.5x30
	4584363	2	WASHER FLAT M12x26x4
	6151017	2	BOLT HXHD M6x1.0x16
	6151046	2	WASHER FLAT M6
	6151128	2	NUT FLANGE M6x1.0
6821199	1	LOOM JK JEEP NUMBER PLATE	
MISCELLANEOUS	211512	1	OPERATOR INSTRUCTION CARD
	2125484	2	RECOVERY POINT WARNING LABEL
	180302	6	CABLE TIE 4.8 X 180 MM BLACK
	3163222	2	SENSOR BLANKING PLUG PAIR

PREPARATION OF VEHICLE



1. Start by removing the bumper. There will be three bolts per side, two on the bottom side of each frame rail and one on the rear body mount.



2. Disconnect the two connectors on the sides of the rear bumper.



3. Remove bumper and lay down on the floor so that the harness can be removed. Label each sensor and orientation for correct fitment to rear bar.



4. Remove the wiring harness for the parking sensors and license plate light and set aside for later.



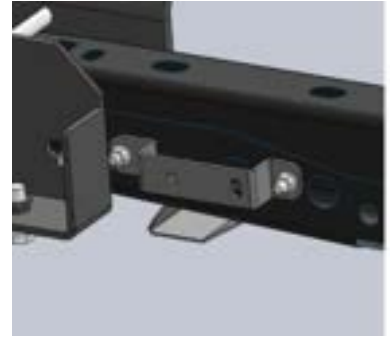
5. Loosen harness in the left corner of the chassis in order to fit the bumper mounting bracket.



6. On the right side, the muffler mount will need to be relocated in order for the mount to fit. Start by removing the current rear muffler mount. You can access the two bolts through the crossmember.



7. Install muffler mount onto mount relocation bracket first, using the OE bolts. The longer leg of the relocation bracket goes on the outboard side. Then insert M8x20 bolts and washer through crossmember. Fasten using M8 nuts.



M8 – 22Nm / 16lbft



8. Place both bumper mount brackets onto chassis ends and fasten in place using OE bolts. Don't fully tighten these yet




9. Using M16x35 bolts and nut, fasten through side, do not tighten. Repeat for both sides.





10. Using an M12x110 bolt, washer and nut per side, slide bolt through hole directly above the crossmember.



11. On the left side, assemble an M12x110 bolt, washer and nut through the mount and chassis and tighten. At this point all the bolts on the left side can be torqued.

 M12 – 77Nm / 57lbft

 M16 – 175Nm / 129lbft

 M10 OEM – 71Nm / 52lbft





12. Moving to the right side, a Ø12mm hole will need to be drilled in the front of the crossmember using the mount as a template.




13. Debur the drilled hole and add anti-corrosion touch up paint.

14. Insert an M12 x 110 bolt with washers through the mount and chassis, fit nut and torque to spec along with other mounting fasteners on the RHS.

 M12 – 77Nm / 57lbft

 M16 – 175Nm / 129lbft

 M10 OEM – 71Nm / 52lbft



15. Install the recovery point bracket using 2 x M12x30 bolts and washers as shown. Do not fully tighten yet.

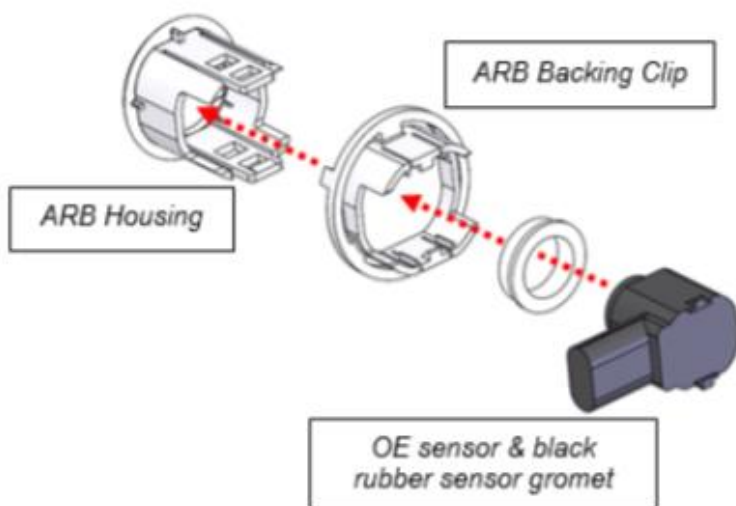


16. Insert 1 x M12x50 bolt and washer into recovery point top bolt hole with the bolt head facing outboard. LHS shown.



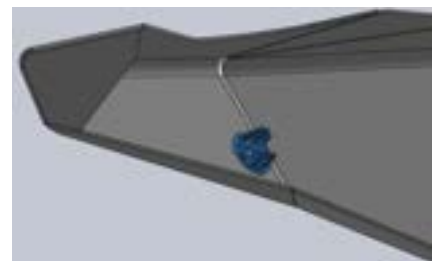
17. With the recovery point bracket pressed against the recovery point, tighten the two bolts into the mount. Then insert 2 x M12x55 flange head bolts into the recovery point as shown. Fit 3 x M12 flange nuts but **Do Not Torque** as adjustment may be required.

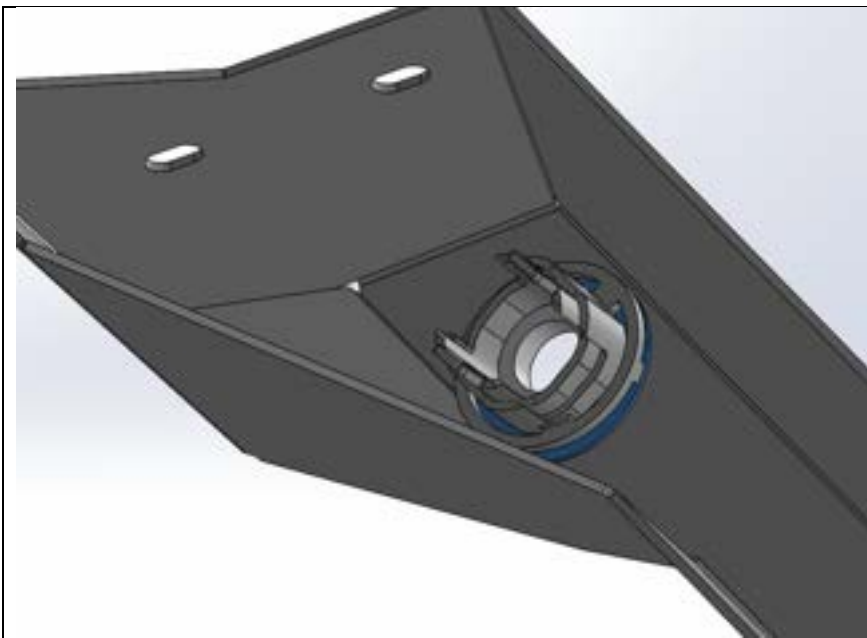
Bar Assembly



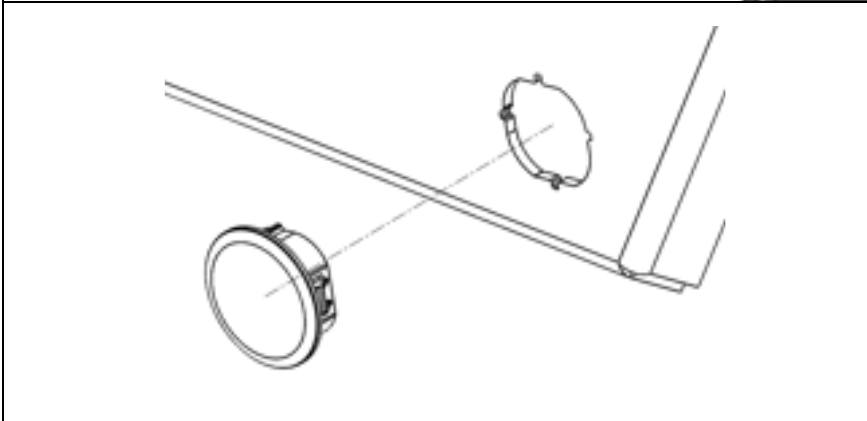
Generic Image Only

18. With bar laying on the its face on a soft surface, insert the parking sensor housings into the two outermost parking sensor locations

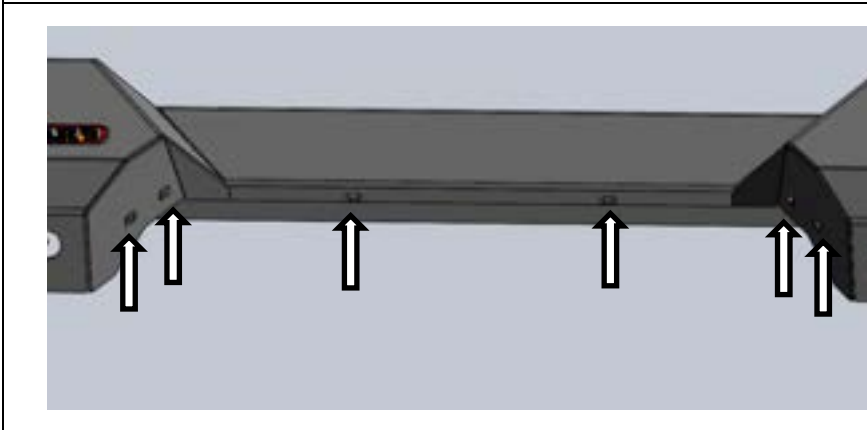




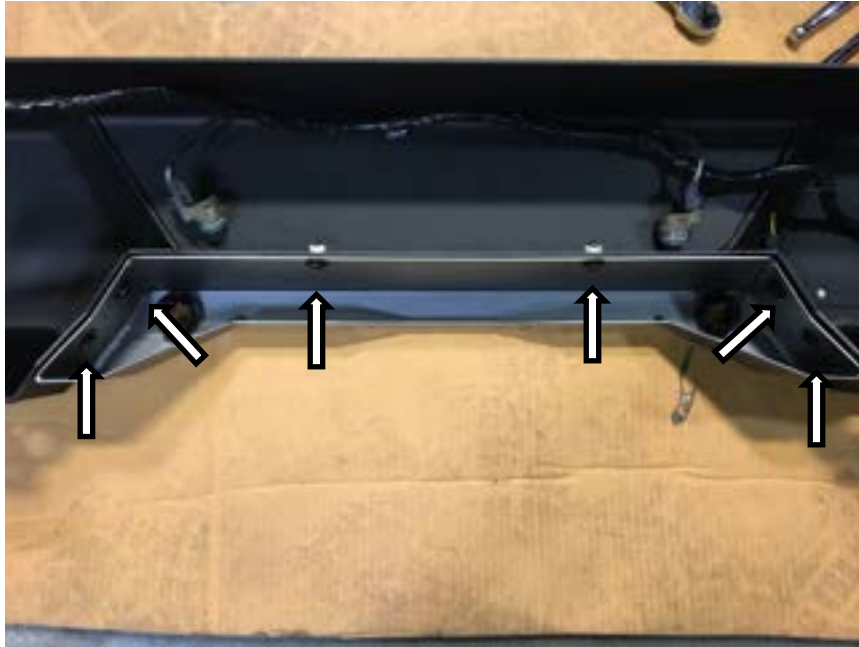
19. Insert parking sensor housings into centre insert. Use one sensor shim underneath the backing clip per side.



NOTE: Blanking plugs have also been supplied for vehicles not equipped with parking sensors.



20. Insert 6 x M6 cage nuts into the bar in the positions shown



21. Using 6 x M6x20 bolts and washers, fasten centre insert into the bar.



M6 – 9Nm / 7lbf



22. Using a razor, carefully cut harness wrap 50mm back from the sensor to allow the inner right parking sensor enough slack to be installed. Do not damage the wiring, only cut the electrical wrap.

At this point, the harness can be installed and routed through the bar. Plug all the parking sensors in.

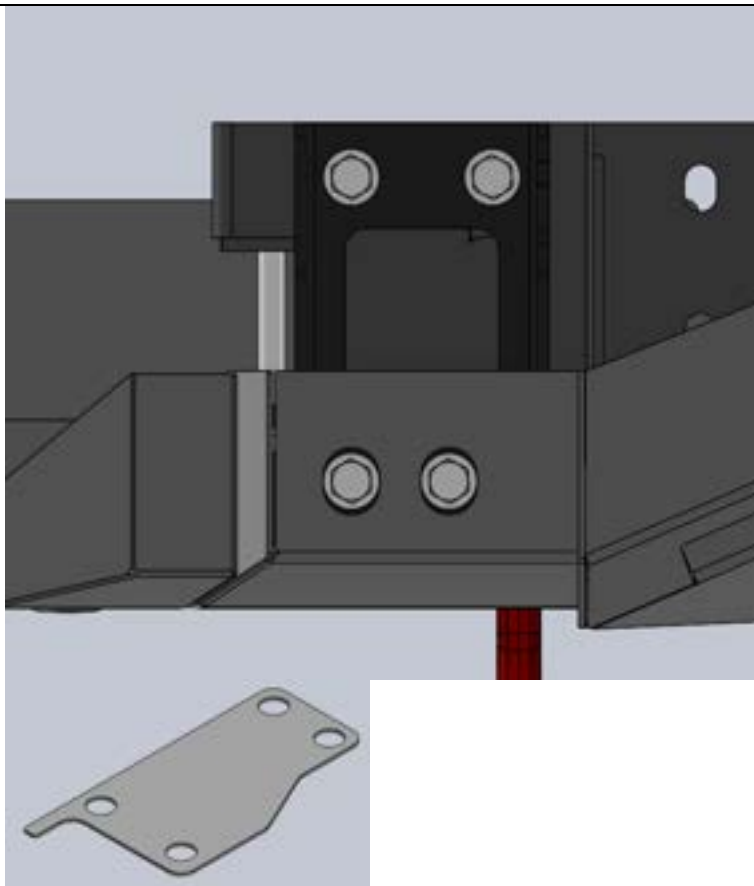
Please note orientation of sensors.



23. Cover recovery points in tape in order to protect the finish during installation.



24. Using a friend or a lift table, carefully install the bumper onto the vehicle.



25. Using four M12x35 bolts and washers per side, fasten the bar to the mounts and check for level.
26. Check the recovery points are centred vertically in the apertures of the rear bar. Adjust if necessary.
27. Carefully remove bar and torque recovery point fasteners once centred.



M12 – 77Nm / 57lbft



M12 Flange 10.9 – 105Nm / 77lbft

28. If the level of the bar needs to be corrected, insert 1 or 2 of the 2mm packers between the bar and mount on the highest side.
29. Re-install the bar and torque the bolts to spec.



M12 – 77Nm / 57lbft



30. Using two button head M4 screws and washers, attach license plate light to the license plate bracket.



M4 – 1.8Nm / 1.3lbft



31. Remove upper two lug nuts from spare wheel. Replace with coupling nuts.



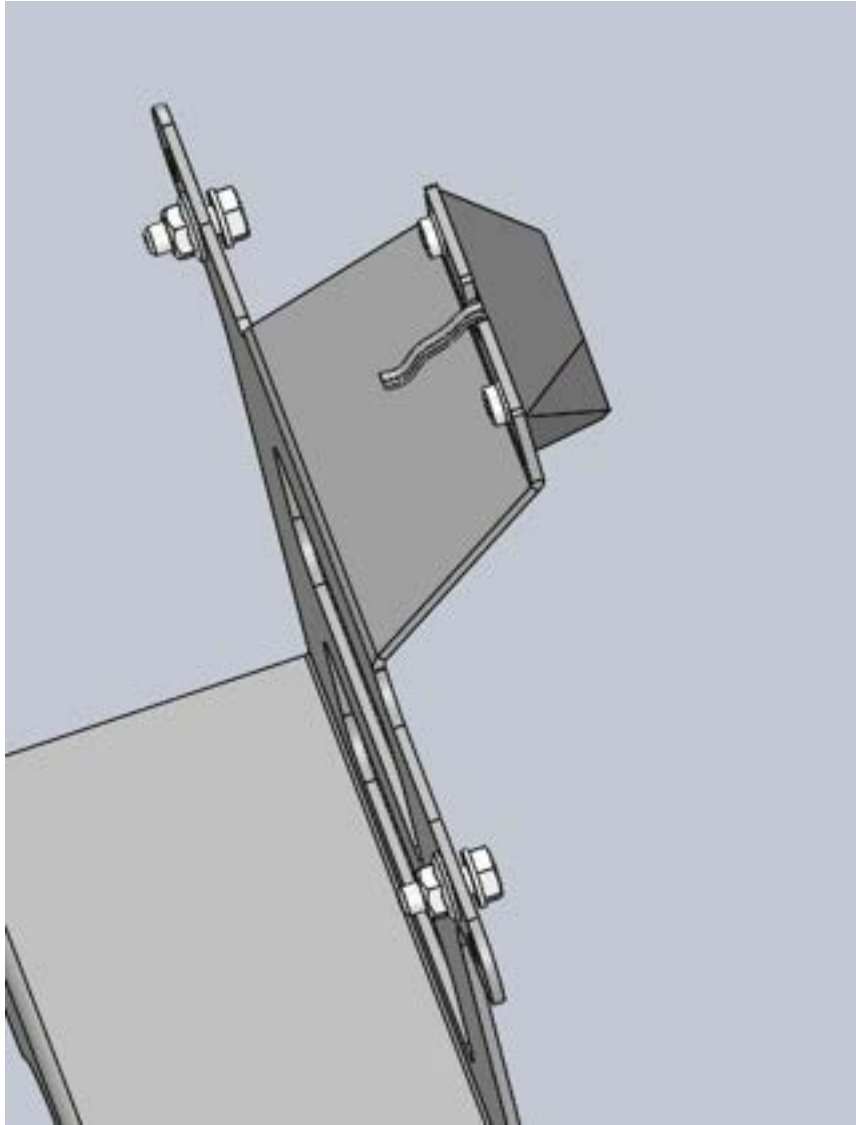
M12 – 77Nm / 57lbft



32. Using 2 x M12x30 bolts and washers, attach license plate bracket to coupling nuts.



M12 – 77Nm / 57lbft



33. Use two M6x16mm bolts, nuts and washers to attach the license plate to the license plate bracket.



M6 – 9Nm / 7lbf



34. Remove both plastic panels on the rear door. Using supplied wiring, route through the grommet in the door and run along the OE harness.





35. Fold down rear seats and remove lower trim.

Starting from the outer edge, carefully remove the rear cover trim.

36. Working around the main RHS panel, slowly move around the panel and pop each clip out.

Remove connectors for the interior light and power outlet.

Set aside in a safe location.



37. Unplug the large black connector and locate the dark blue wire with white trace. Splice the white wire from the extension loom onto this wire. The earth is the black wire with grey trace. Use solder and heat shrink. Secure wiring with cable ties.



38. Re-install all the plastic panels and trims in reverse order from 36 to 34 making sure all trims are correctly fitted.

FINAL CHECKS:

- Check operation of parking sensors
- Check operation of all lights.

IMPORTANT: Check that all wiring is clear of sharp edges and pinch points. Adjust any wiring to clear the bar or mounts by a minimum of 15mm.

FINAL PRODUCT ON VEHICLE

